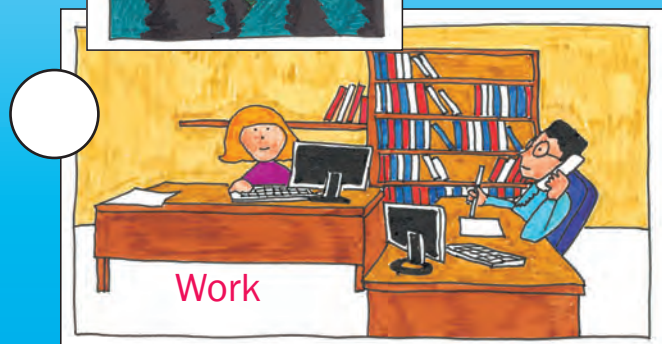
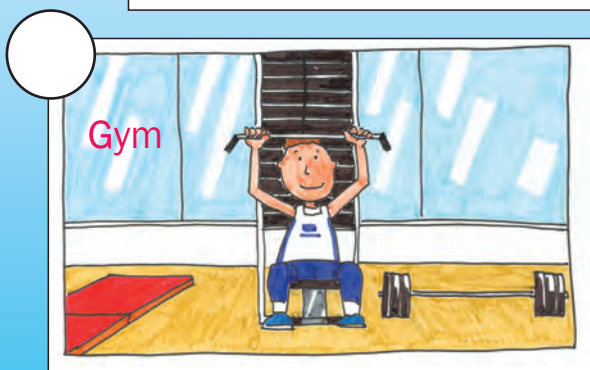
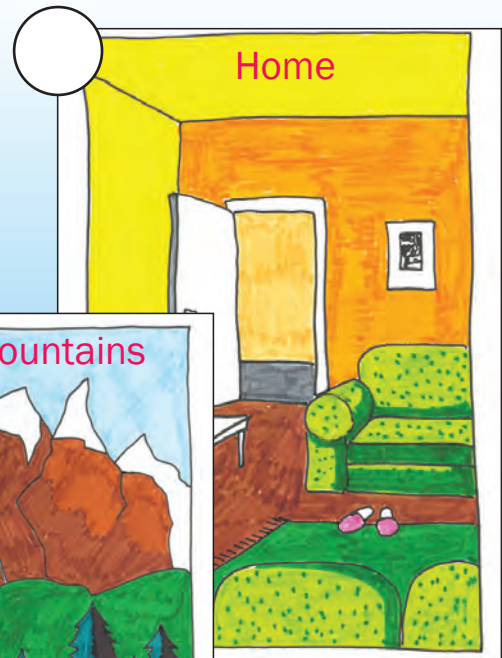


## PLACES

- In this unit:**
- ✓ We read about two important towns in northern Greece
  - ✓ We write about the place we live in
  - ✓ We listen to someone giving directions to a visitor in Athens
  - ✓ We speak about other cities around the world

*Places and sounds. Listen and guess?*



# 3 Unit

## Lesson 1

## THE PLACE WE LIVE IN

### A LEAD-IN ▶▶

- Do you live in a city, a town or a village?  
Do you like living there? Why?



Which is better?  
The city or the village?

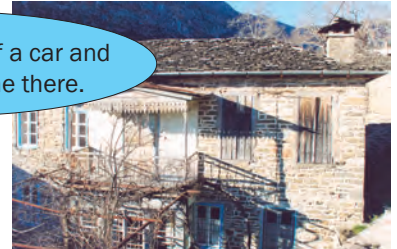


Do you enjoy living  
in the countryside?

Yes, because my owner lets  
me go everywhere!

How do you get  
to the park?

I hop into the back of a car and  
my owner drives me there.



### B READING & WRITING



Our 3 Net friends (Mark, Kostas and Nadine) are getting to know each other better. You are interested in learning how they live and in comparing your life with theirs. Read what they say about the places they live in and about where their parents work. Keep some notes and discuss things with your classmates. Write your notes in the boxes below.

**Mark:** Hello there! As you both know, I live in London, a very big city.. My father is a shop owner and he always goes to work on foot. His bookstore is in our neighbourhood. Lucky fellow.....

**Kostas:** I live in Athens and our flat is in Nea Ionia, a suburb of Athens. My mum, who is a bank clerk in the city centre, usually drives to work and it takes her over an hour to get there. She doesn't use public transport. I don't think it's a good idea she drives to work. And she has huge problems in finding a parking place every day!

**Nadine:** Well, my family and I live in the centre of Marseilles, which is a big city in the south of France. My parents work in a factory outside the city and they go to work by bus. Many of their colleagues drive to work but it seems to me my parents are doing the right thing. It's better to take the bus - the traffic is so heavy!

Name	Occupation/job	Place of work	Method of transport
Mark's father			
	Factory worker		
		Athens (city centre)	

## C WRITING



Now write a letter about the place you live in and about your parents.

- Where do your parents work? (in an office, in a bank, in a shop, on a farm, etc)
- How do your parents go to work? (on foot, by car, by bus, by motorbike).

With your partner:

- Listen to each other's corrections and suggestions.
- Look at the texts in the previous page and use them as models.
- Finally, write your answer in your notebook.



## D LISTENING



Mark is on holiday in Greece with his parents and is visiting Kostas in Athens. Ioanna, Kostas's friend is with them. They are going to spend the day on Mt. Parnitha and are getting ready with some last-minute preparations.

Listen to the text and draw lines to link the children to the places where they need to go before they leave for Parnitha.



newsstand



Mark



home



bakery



Kostas



supermarket



Ioanna



cake shop



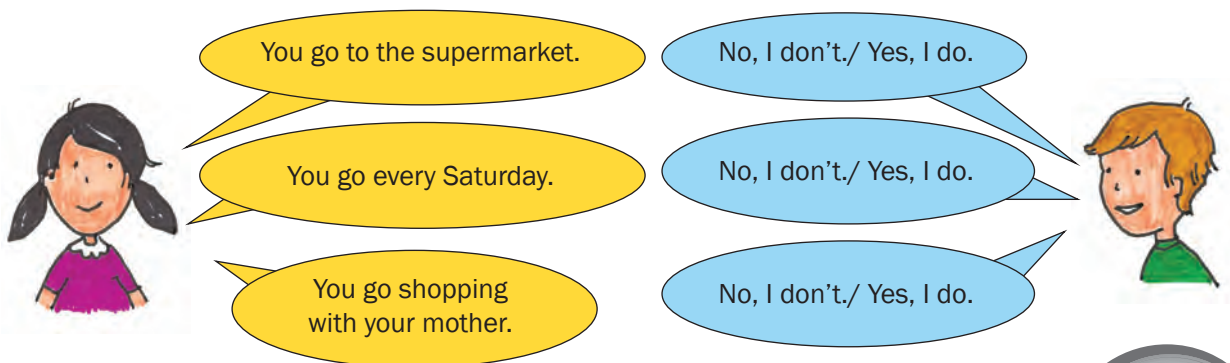
## E GAME



Play with your partner. With small pieces of paper, make 5 role-play cards each. On each card write:

- 1. a place you visit
- 2. why you go there
- 3. how you get there

Ask your partner to choose one of your cards. You hold your card without your partner seeing it and get your partner to ask you questions with yes/no answers to find the answers. Keep a score to see how many questions each of you needs to arrive at the answers for all the cards. Then exchange roles. The one with the least questions wins.



## GRAMMAR FOCUS

## Expressing opinions - Making suggestions

Study the sentences to see how we can express opinion or make suggestions.

**I think that** driving to work costs a lot of money.

**I don't think that** driving to work is a good idea. It is tiring!

**It seems to me that** walking to school is a very healthy habit.

**In my opinion,** going to work by bus is cheap and convenient.

**Why don't you** use public transport instead?

**How about** walking to school rather than taking the bus?

**Let's** all go to the city centre in the metro tomorrow!

## F WRITING: DO YOU LIKE THE PLACE YOU LIVE IN?



WWF (World Wildlife Fund) have an international campaign about how we can make our lives better. They want children's ideas, opinions and suggestions on problems in big cities. Discuss with your partner; write some possible answers to the problems mentioned in the following leaflet. Exchange ideas with other pairs in your class and see what they think. Use the expressions in the "Grammar Focus" table above to help you.

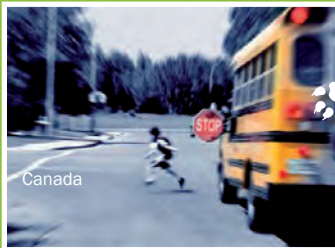


Give us your opinions and ideas about the following issues:



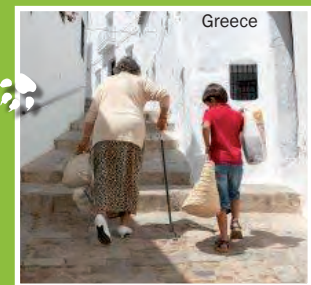
going to work by bus

taking care of trees that are planted in front of your house or block of flats



crossing a street without looking

helping elderly people in your neighbourhood with their shopping



riding your bike along a busy street or avenue.

## PROJECT



Choose any of the issues mentioned above or any other problem you find important. Make a poster for your class, using drawings, magazine pictures, photos, real objects, stickers, badges, etc. Illustrate the problem for your classmates and add your suggestions about possible solutions. Use various sources such as relevant leaflets, WWF website ([www.wwf.org](http://www.wwf.org)) or the Greenpeace website ([www.greenpeace.org](http://www.greenpeace.org)). You could also use information from **Ερευνητές**, the children's newspaper ([www.erevnites.gr](http://www.erevnites.gr)) that comes with **Καθημερινή** newspaper every Saturday.