

Unit 4:

Time

Lesson 1:

Happy Birthday!



1 When are these holidays? Write the months:

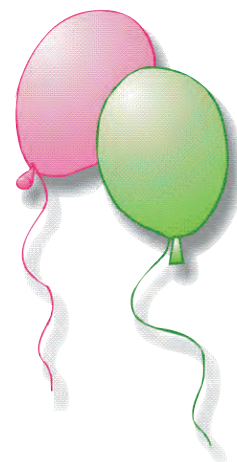
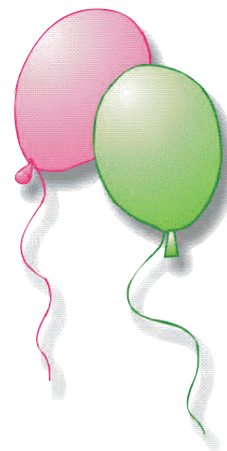


- ☼ New Year's Day: In
- ☼ Christmas: In
- ☼ Mother's Day: In
- ☼ St Valentine's Day: In
- ☼ 1821 National Holiday: In
- ☼ 1940 National Holiday: In
- ☼ **Your** birthday: In
- ☼ **Your** name day: In



2 Complete the puzzle. Which month isn't in the puzzle? Which is the secret phrase?

			1	S									
2	J												
			3	M									
4	N												
5	D												
	6	M											
				is									
	7	A											
8	F												
9	J												
			10	A									
11	O												



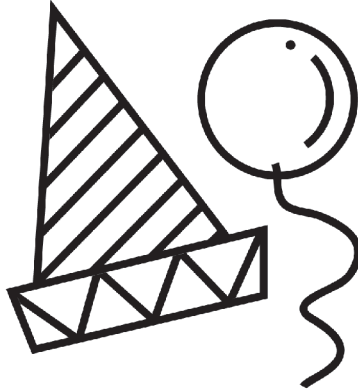
1. We go to school in this month
2. New Year's Day is in this month
3. A month with three letters
4. The month after October
5. Christmas is in this month
6. The month after February
7. This month starts with **A** and is a summer month
8. It has 28 or 29 days
9. We finish school in this month
10. The month after March
11. The month after September

✓ isn't in the puzzle.

✓ The secret phrase is:!

3

When is your birthday? Write an invitation card for your birthday party and colour the pictures:



Come to my party! It's on.....

.....

.....

.....

.....

.....

.....

.....

4 Read and match. Write the letters in the blanks:

1 a. It's twelve o'clock
 b. It's quarter past eleven
 c. It's half past five
 d. It's quarter to two
 e. It's quarter to eleven
 f. It's quarter past six
 g. It's half past nine
 h. It's three o'clock

1....., 2....., 3....., 4....., 5....., 6....., 7....., 8.....

5 Answer these questions about yourself:



- ☼ What time do you get up in the morning?
- ☼ What time do you go to school?
- ☼ What time do you come home from school?
- ☼ What time do you start your homework?
- ☼ What time do you go to bed?

6 Sophia's mother is telling her what to do this week. Look at Sophia's diary and write the time in the blanks in her mother's words (use phrases):

SEPTEMBER	
Wednesday 17	5.30 English class 7.15 French class
Thursday 18	6.15 dentist 7.00 French class
Friday 19	6.45 cinema with Kate
Saturday 20	6.30 Angela's party

So, Sophia, don't forget!
 You've got an English class at (1)..... on Wednesday and then a French class at (2)..... On Thursday, you've got a dentist's appointment at (3)..... and at (4) you've got a French class. On Friday the 19th, cinema with Kate at (5)..... and on Saturday, it's Angela's party at (6).....



7 Match questions and answers:

- | | |
|------------------------------------|-----------------------------------|
| 1. When's your birthday? | A. No, but it's warm |
| 2. Is it hot in Greece in May? | B. It's raining |
| 3. Which is your favourite season? | C. It's on June 21 st |
| 4. Is it cold today? | D. No, it isn't |
| 5. What's the weather like? | E. Summer, but I also like spring |