

Look, everybody is here! Why?



Tammy, this is the magic island!

I'm so excited!

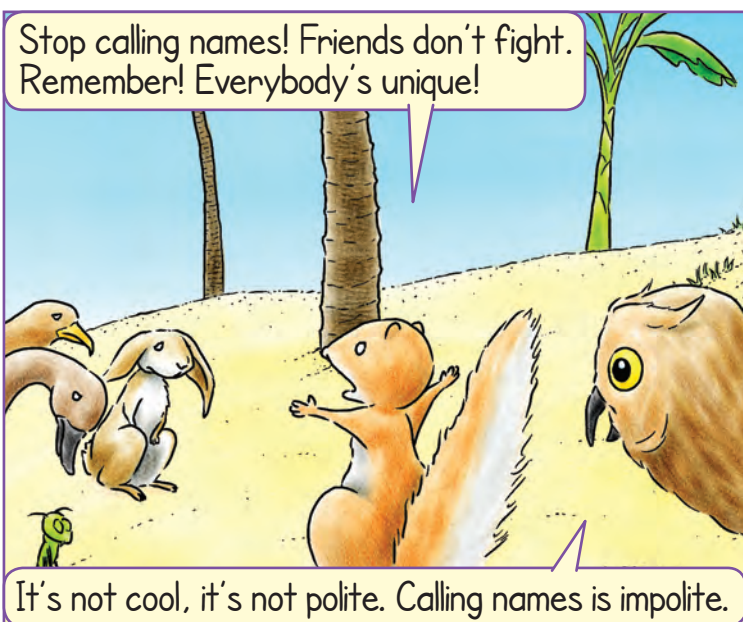
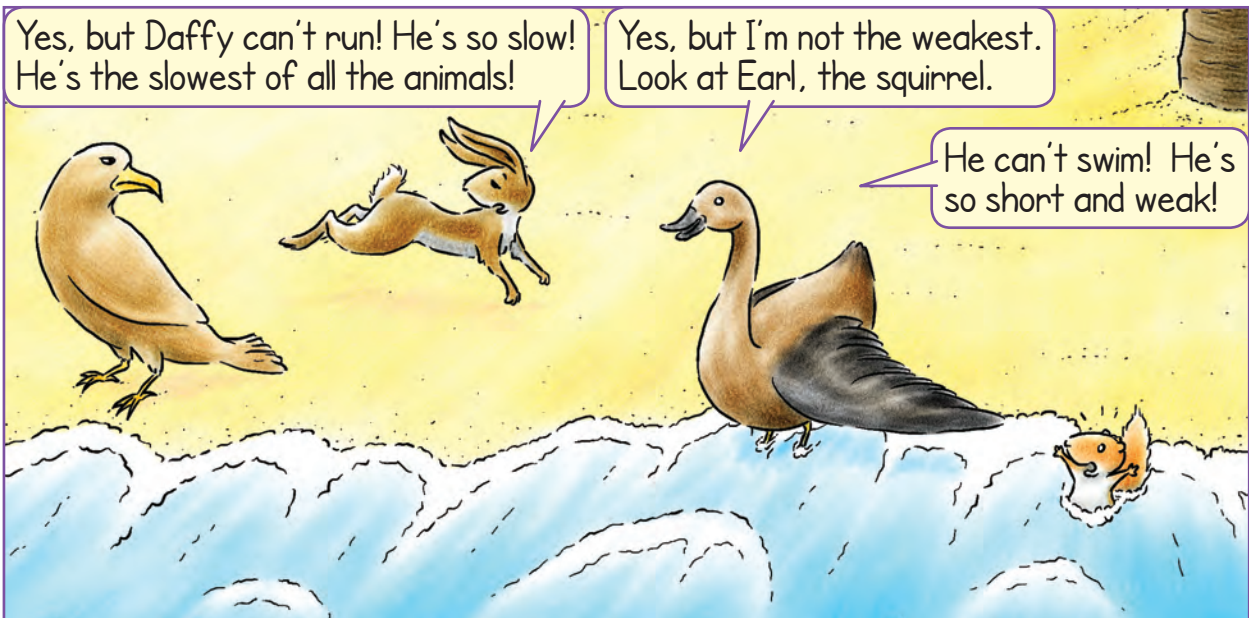
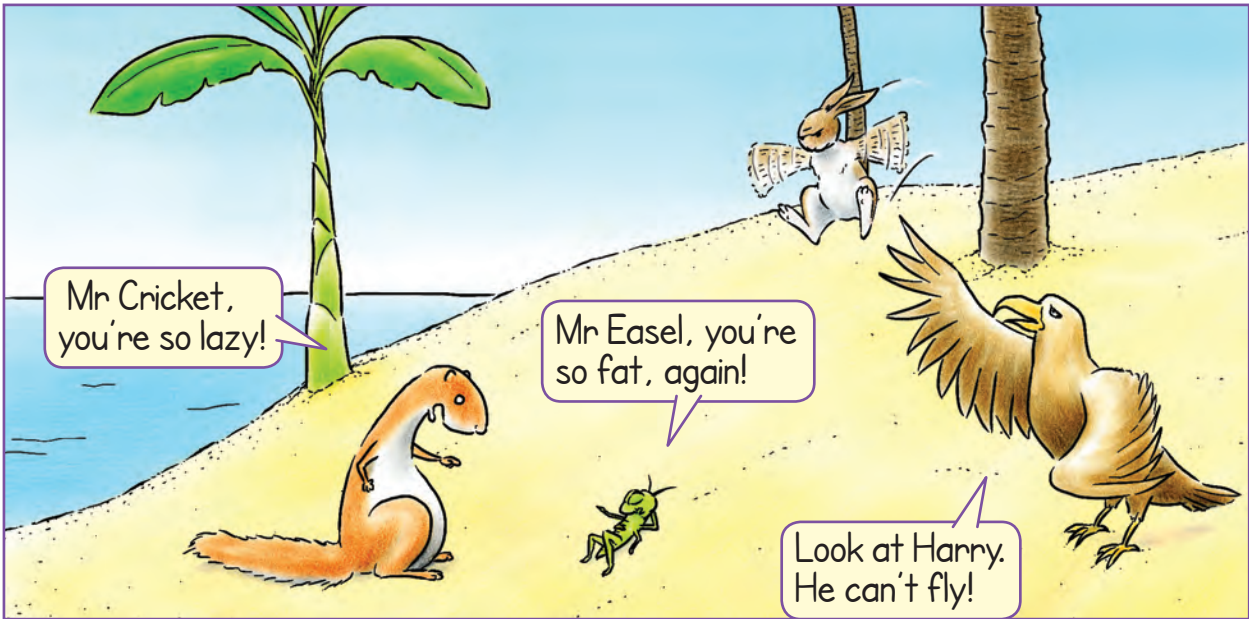
Unit 10

The magic island

Lesson 1: Be kind

Listen and read.



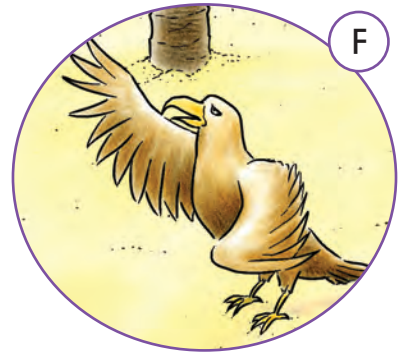
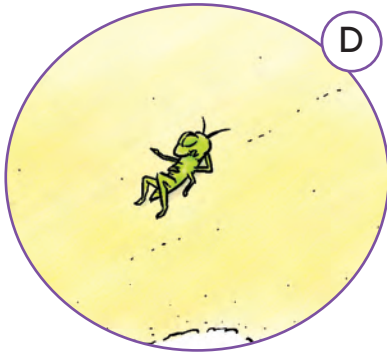
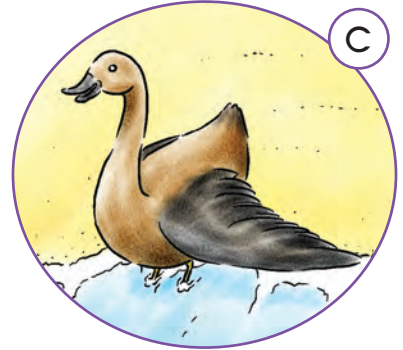
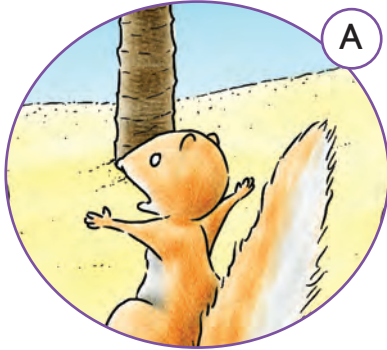




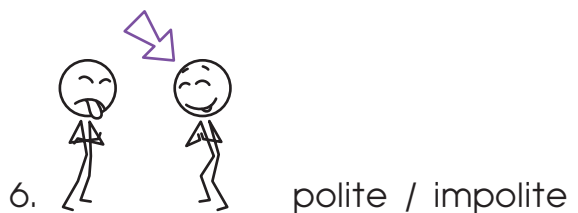
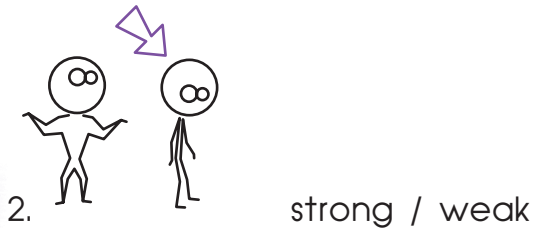
1. Who says that? Listen and match.



Easel, the weasel!



2. Choose and say.





3. Guess who.

Mr Ant

He likes working and saving food.

He's cute and kind.

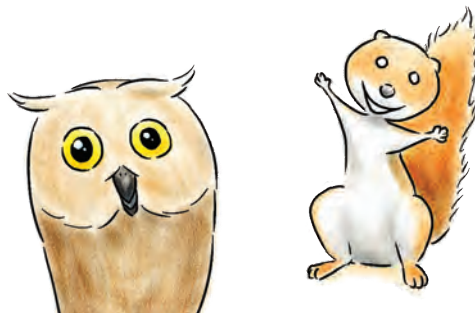
He likes running and he's fast.

She's got wings and she can fly but she can't swim.

He loves swimming but he can't run.



4. Can you say it?



It's not **right** to **fight**! Be polite!